

Werkschrift

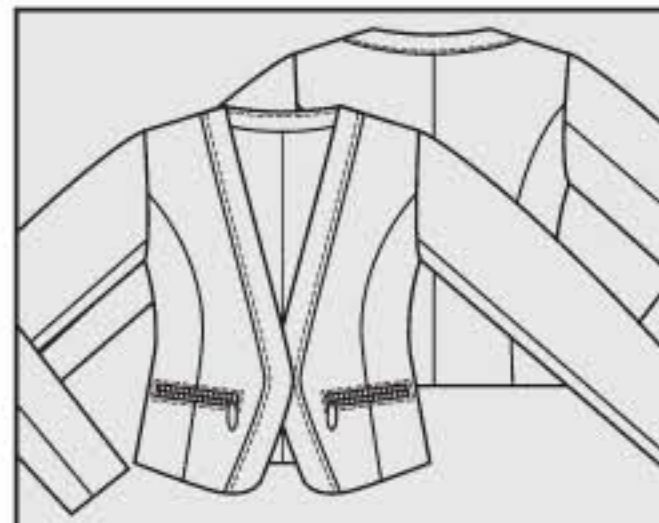
oktober 2013



Online te bestellen
patronen.
[www.knipmode.nl/
shop](http://www.knipmode.nl/shop)

Op deze pagina vind je een overzicht van alle modellen. De stippen geven de moeilijkheidsgraad van het model aan. De modellen zijn genummerd. In volgorde van de nummers kun je in het werkschrift de beschrijvingen vinden. De paginacijfers verwijzen naar de foto's in het tijdschrift.

Vest/bodywarmer /jas



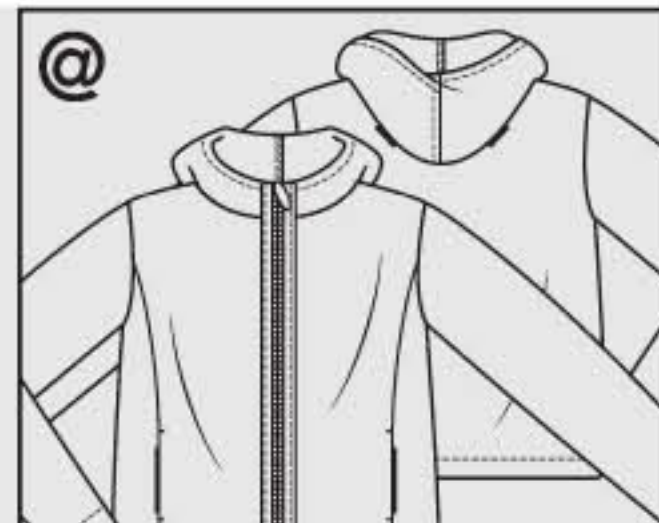
1 JASJE ●●●●
maten 34-36-38-40-
42-44-46

zie pag. 19, 66



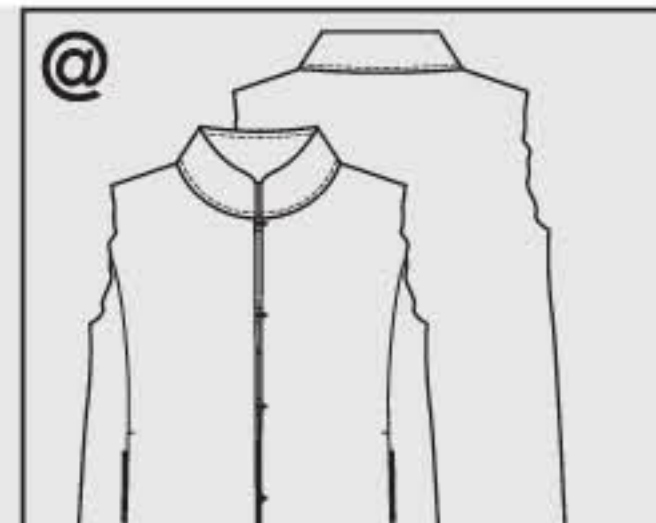
2 JASJE ●●●
maten 34-36-38-40-
42-44-46

zie pag. 6



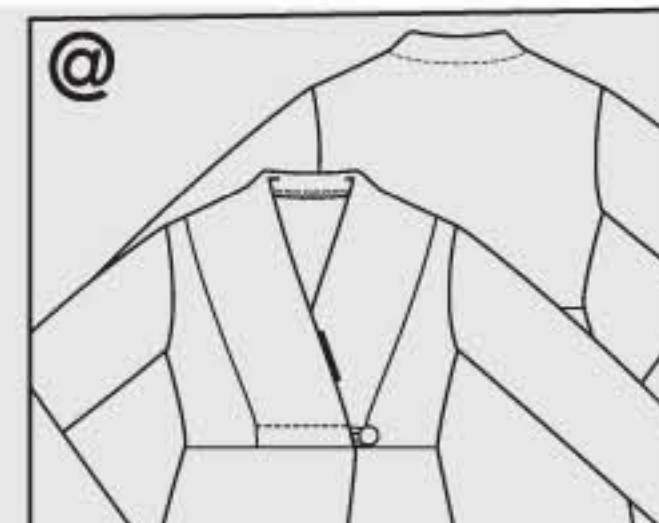
7 VEST ●●
maten 34-36-38-40-
42-44-46

zie pag. 67



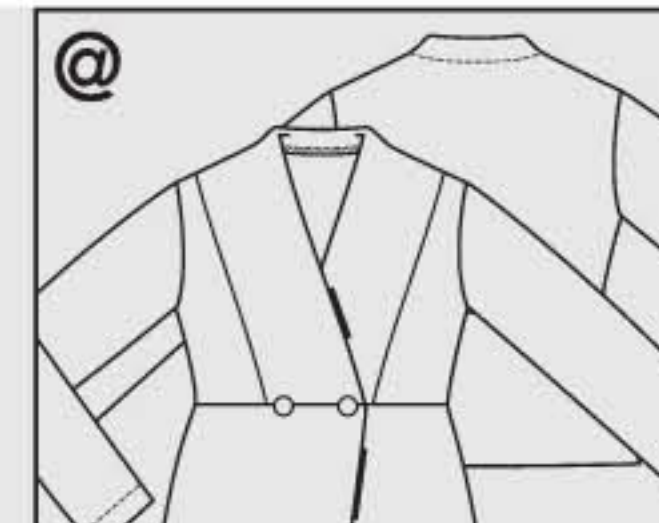
8 BODYWARMER
●●
maten 34-36-38-40-
42-44-46

zie pag. 64



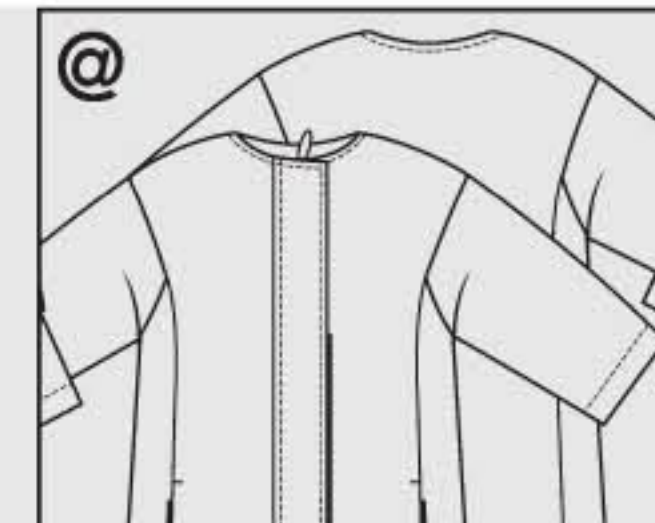
11 VEST ●●
maten 34-36-38-40-
42-44-46

zie pag. 17, 65



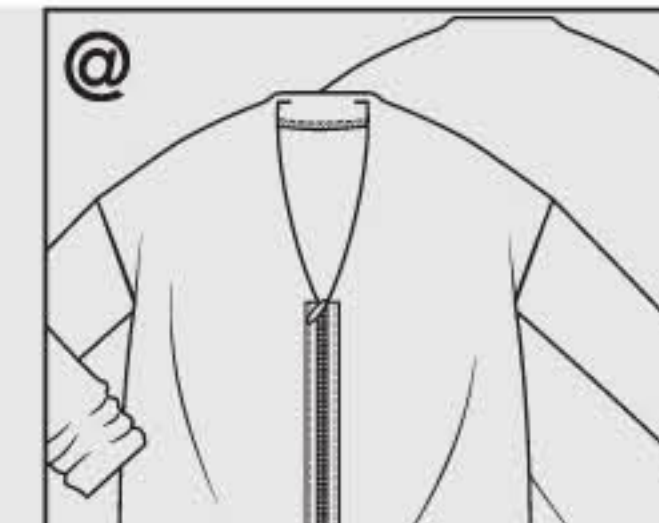
12 VEST ●●
maten 34-36-38-40-
42-44-46

zie pag. 18



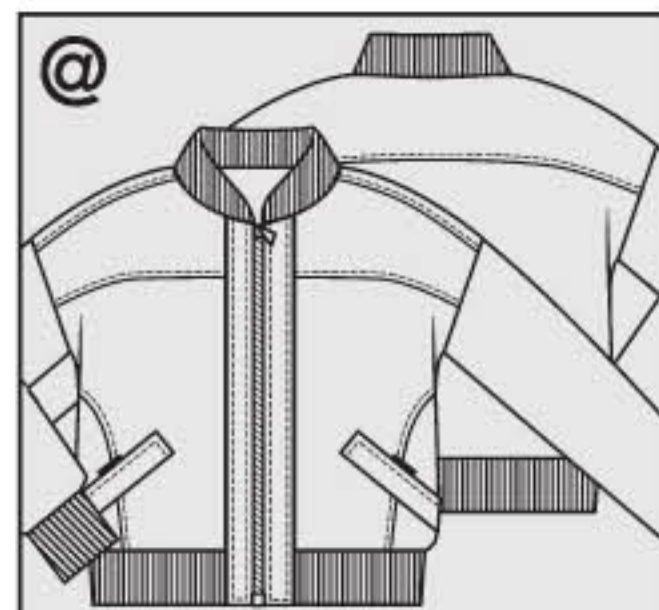
**17 JAS & ACCES-
SOIRES** ●●●●
maten 34-36-38-40-
42-44-46

zie pag. 24, 25



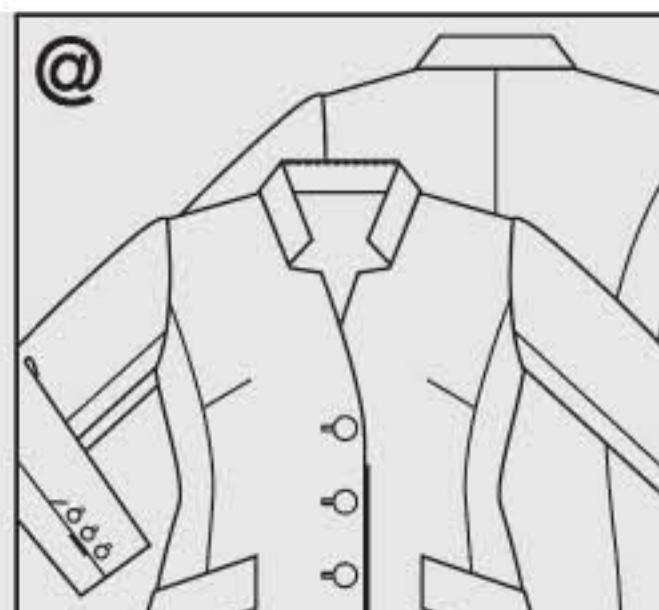
21 VEST ●●
maten 34-36-38-40-
42-44-46

zie pag. 68



22 BLOUSON
●●●●
maten 34-36-38-40-
42-44-46

zie pag. 70



25 BLAZER ●●●●
maten 44-46-48-50-
52-54-56

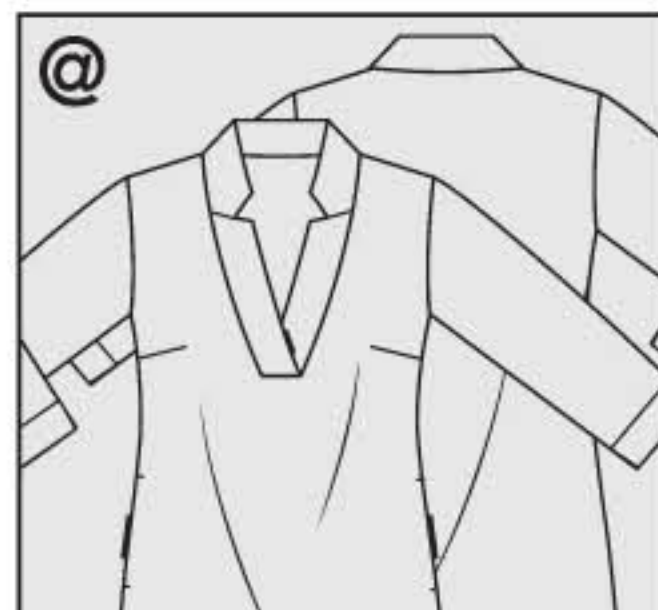
zie pag. 74



28 JACKJE ●●●
maten 34-36-38-40-
42-44-46

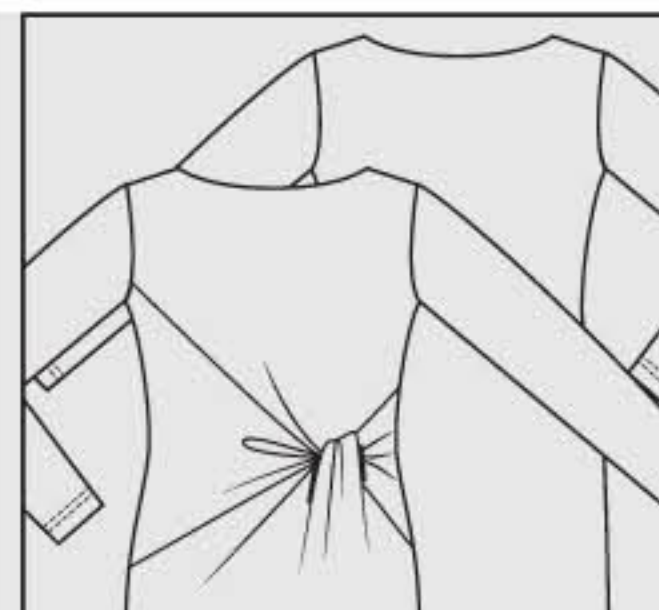
zie pag. 80, 81,
82

Jurk



3 JURK ●●●
maten 34-36-38-40-
42-44-46

zie pag. 16



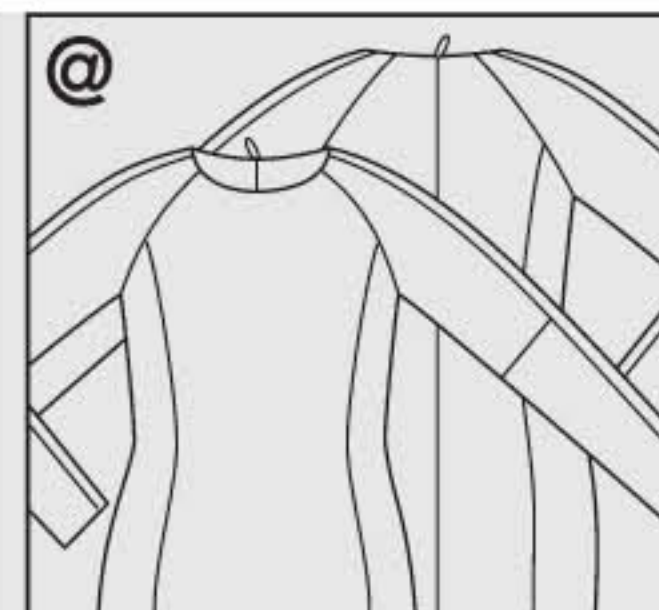
5 JURK ●●●
maten 34-36-38-40-
42-44-46

zie pag. 21



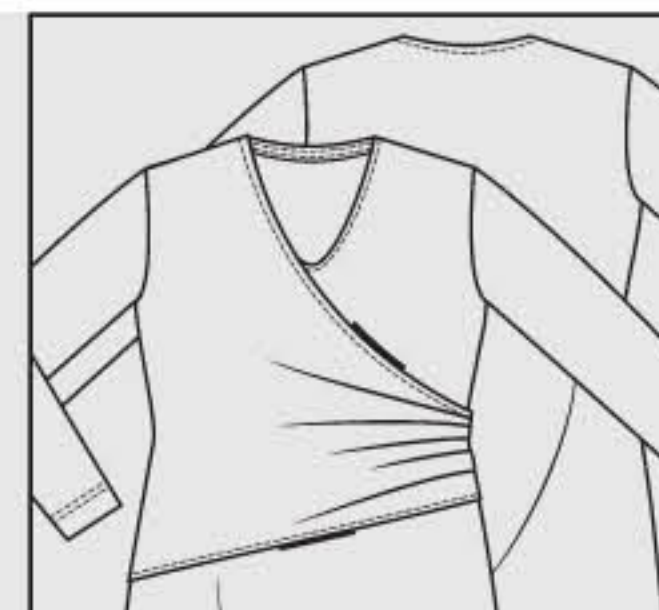
9 JURK ●●
maten 34-36-38-40-
42-44-46

zie pag. 67



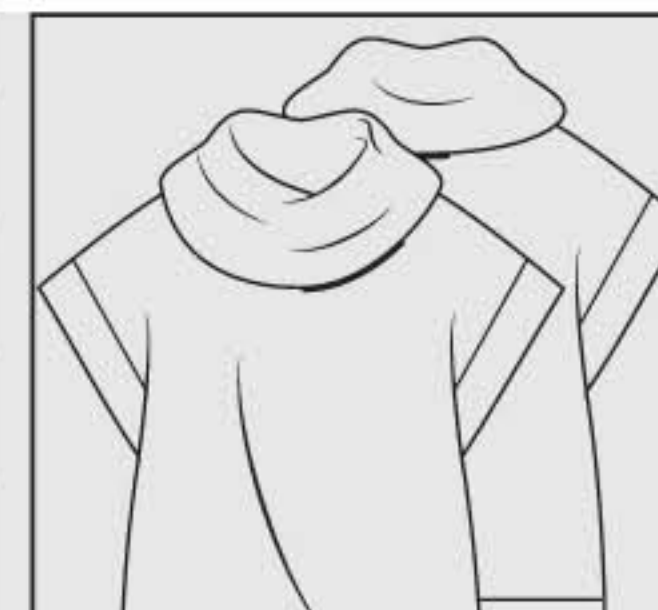
20 JURK ●●●
maten 34-36-38-40-
42-44-46

zie pag. 69



23 JURK ●●
maten 44-46-48-50-
52-54-56

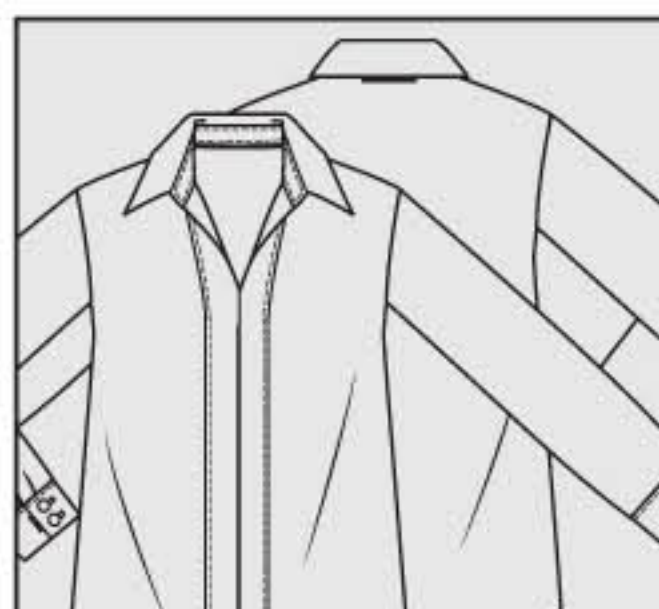
zie pag. 77



30 JURK ●
maten S 34/36/38-
M 40/42/44-L 46

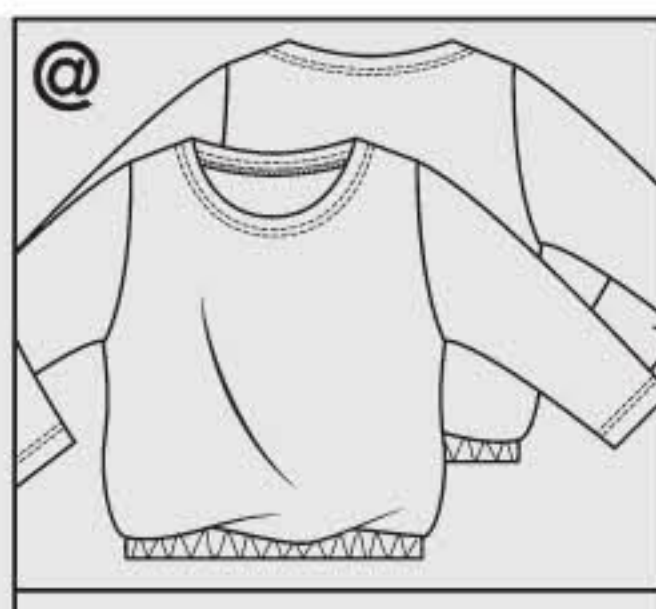
zie pag. 79

Blouse/t-shirt/top



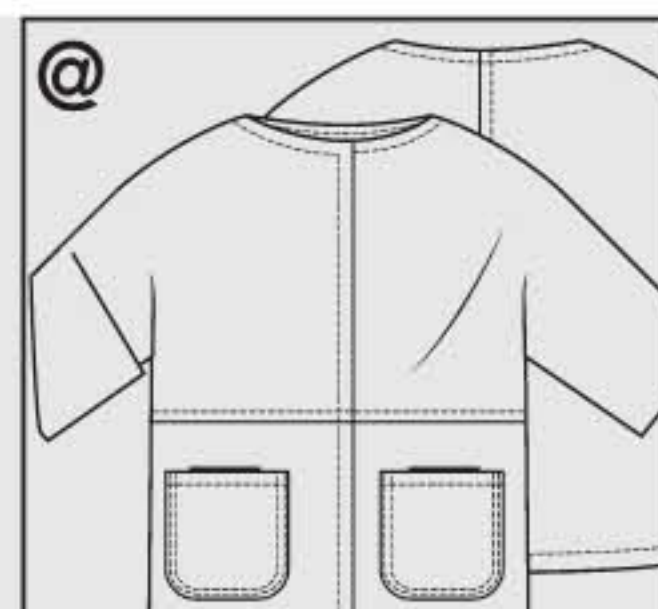
4 BLOUSE ●●●
maten 34-36-38-40-
42-44-46

zie pag. 20



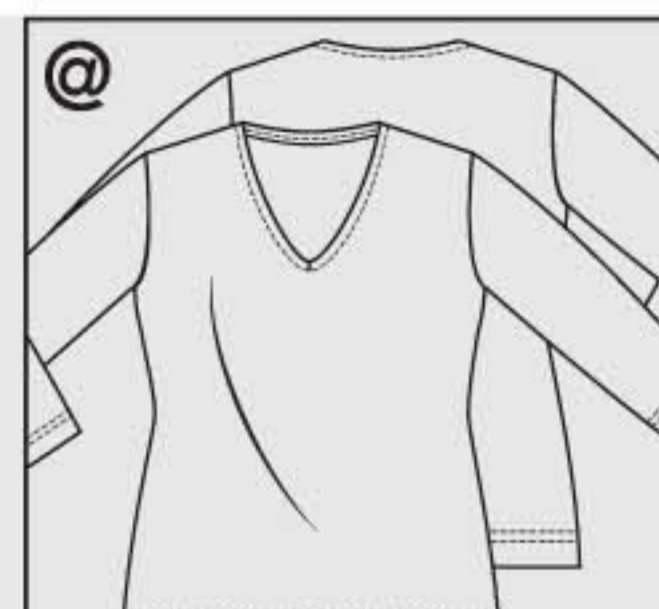
10 T-SHIRT ●●
maten 34-36-38-40-
42-44-46

zie pag. 65



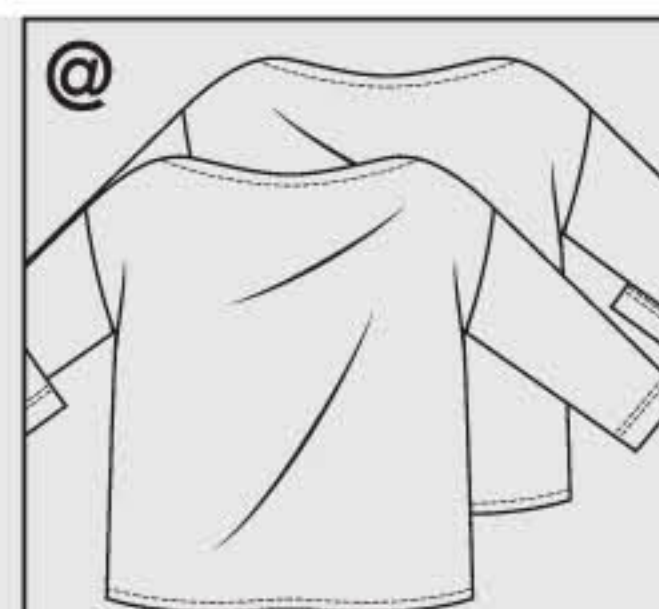
18 TOP ●●
maten 34-36-38-40-
42-44-46

zie pag. 71



24 TOP ●●
maten 44-46-48-50-
52-54-56

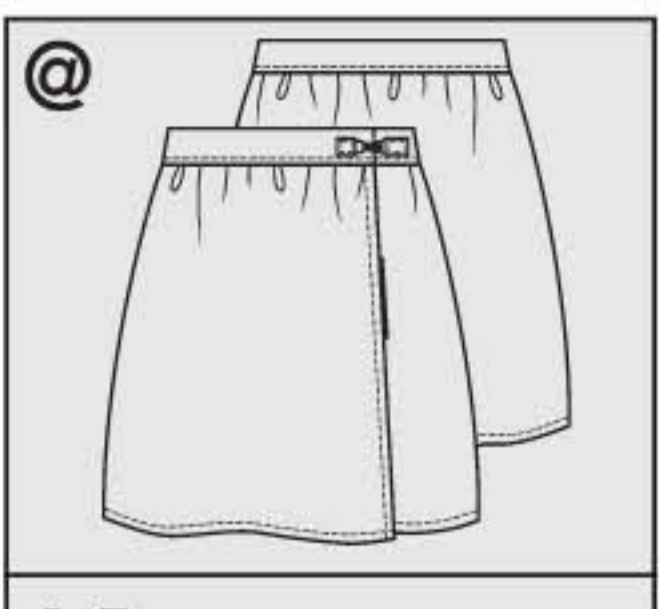
zie pag. 75, 76



31 TOP ●●
maten S 34/36/38
M 40/42/44
L 46

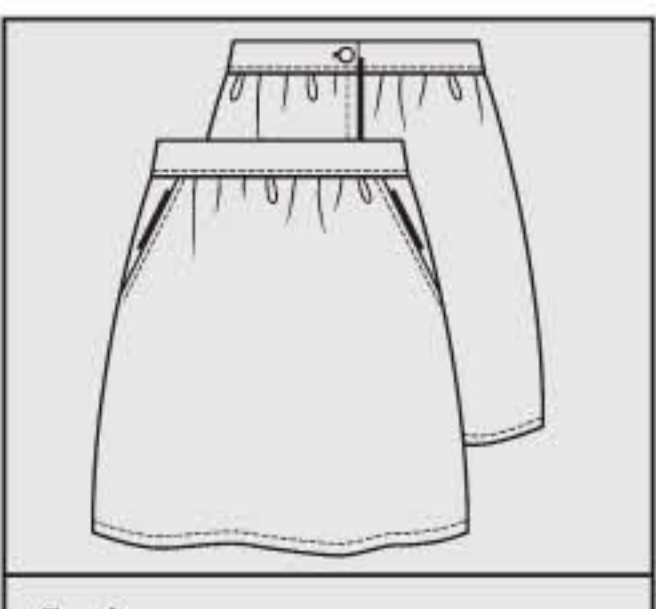
zie pag. 9

Rok



15 ROK ●●
maten 34-36-38-40-
42-44-46

zie pag. 8



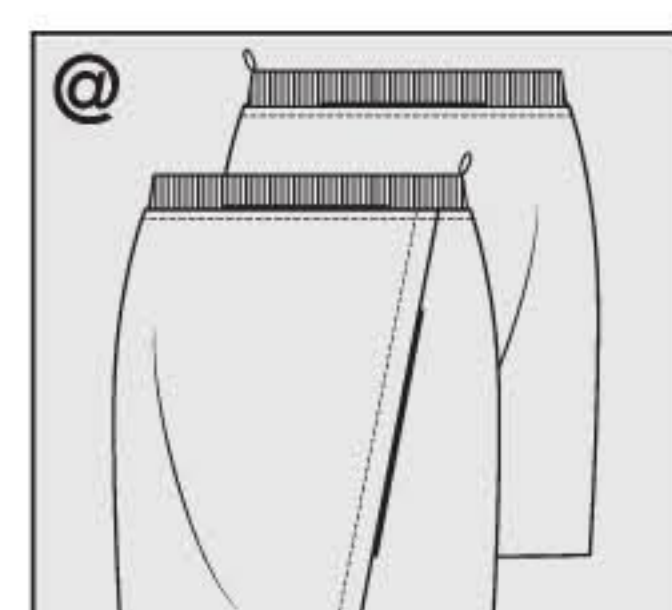
16 ROK ●●
maten 34-36-38-40-
42-44-46

zie pag. 18



19 ROK ●●
maten 34-36-38-40-
42-44-46

zie pag. 71



27 ROK ●●
maten 44-46-48-50-
52-54-56

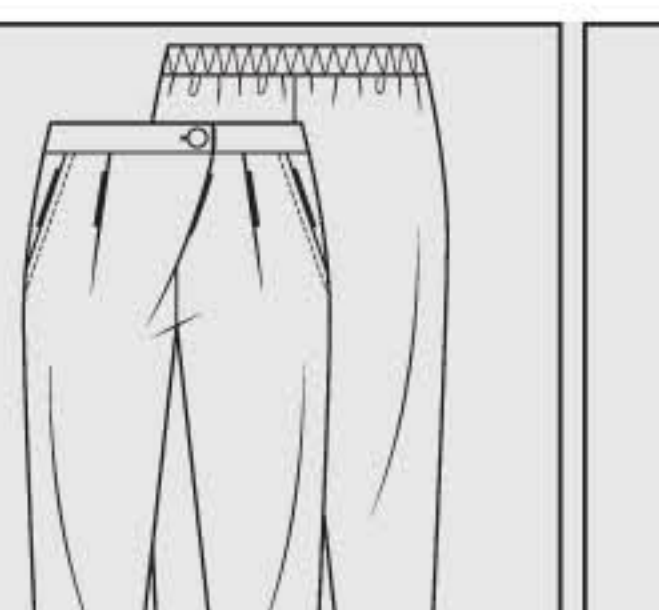
zie pag. 76



29 ROK ●●
maten 34-36-38-40-
42-44-46

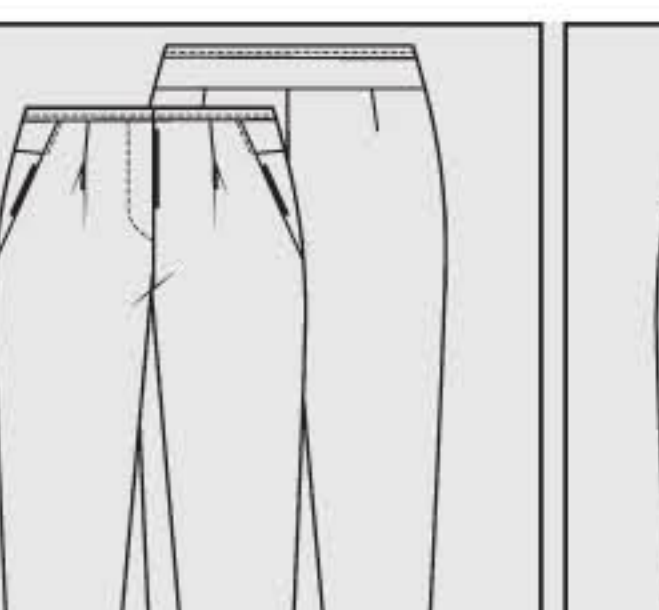
zie pag. 80, 81,
82

Broek



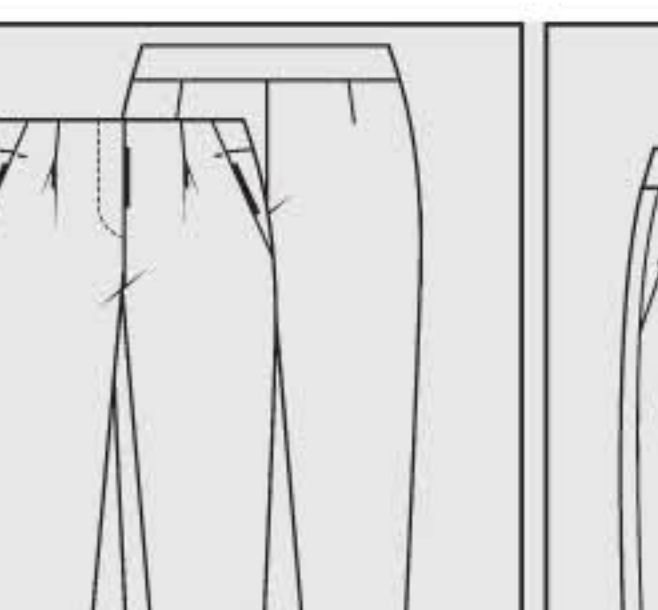
6 BROEK ●●●
maten 34-36-38-40-
42-44-46

zie pag. 20, 66



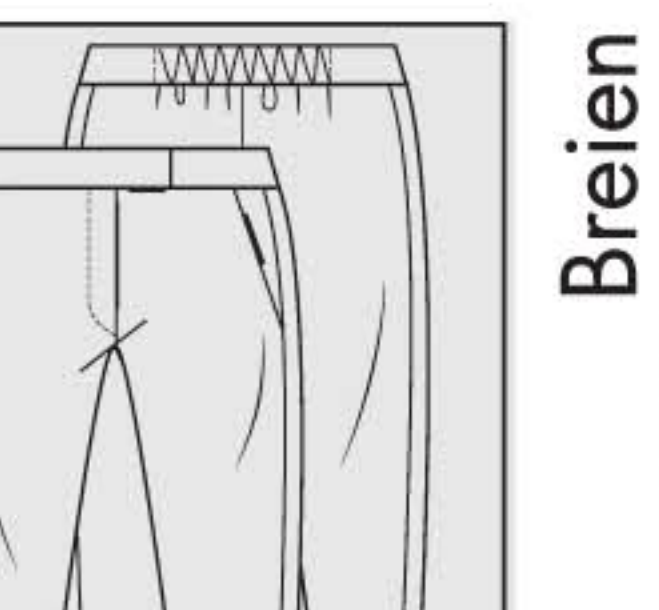
13 BROEK ●●●
maten 34-36-38-40-
42-44-46

zie pag. 19



14 BROEK ●●●
maten 34-36-38-40-
42-44-46

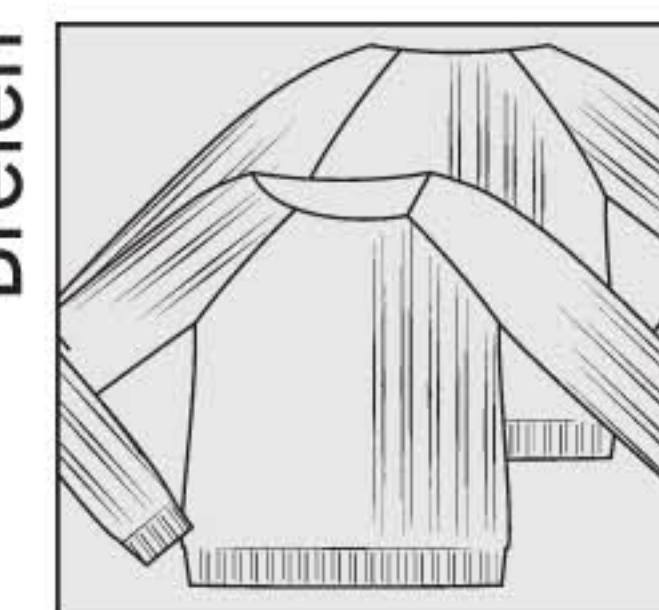
zie pag. 7, 65



26 BROEK ●●●
maten 44-46-48-50-
52-54-56

zie pag. 75

Breien



32 TRUI ●●
maten 34/36-
38/40-42/44-
46/48-50/52

zie pag. 72



33 VEST ●●
maten 34/36-
38/40-42/44-
46/48-50/52

zie pag. 37

34 ACCESSOIRES
• Tas
• Ceintuur
• HaARBAND
• Sjaal
• Broche

zie pag. 7 t/m 9